

# Fruits



Bill Hyatt

Here comes the holiday season  
to get caught up in the secular  
holidays. This causes us to be  
overextended, overcommitted,  
stressed, and over consuming  
items. By mid-December  
and congregations, they are  
exhausted. Most of us are  
attending parties and  
writing Christmas cards  
because we want to  
Christmas.

We, as Christians, should back our  
Christmas with love. We should  
hope for a peaceful season.  
A

## Why I Want to Join the Church

Peg Bainbridge

I want to join the Greenwood Community of Christ Church because I feel very comfortable here. From my first “accidental” visit two years ago and consistently since then, I have felt genuinely welcome, cared for, appreciated, and needed.

I want to join the Greenwood Community of Christ Church because I like so much about it: the impressive number and variety of member - led activities offered to the congregation; the congregation’s characteristic open-minded, respectful attitude to differences in people; the inclusion of women as full participants in the church; the shared responsibility for Sunday services, with the inherent emphasis on education and personal growth; the belief in an open canon of scripture that changes over time; and, especially, the mission of the church.

I want to join the Greenwood Community of Christ Church because I see people who are successfully fulfilling their stated mission every day of their lives, and I would very much like to be a part of that success.

Editor’s Note: On Sunday, November 22<sup>nd</sup>, The Greenwood Village Community of Christ proudly received Peg into our church family. Welcome Peg!



## OBK’s

Rosalee Minthorn

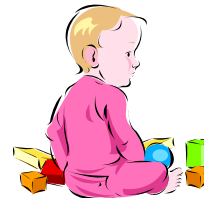


OBKS’s meet the 2<sup>nd</sup> Tuesday of every month. Their next outing will be December 15<sup>th</sup>. Please check your bulletin and announcements for the place!

Please keep looking to the announcements for future outings and activities.

## Nursery Coordinator

Alice Hyatt



We are so fortunate at Greenwood to have little ones who need nursery care during our worship hour. Some days we have as many as six, some days as few as one or two toddlers are in the nursery. As the coordinator I will make every effort to have an assistant available in the nursery when our numbers suggest it is appropriate.

I will be contacting the volunteers, especially as we enter the holiday season, to ask for your help. Thanks for your willingness to offer this special ministry.

12

01/24/10  
01/31/10  
02/07/10  
02/14/10  
02/21/10

eam  
on Team  
Team

## Financial Officer

Art Troyer



### Greenwood Income & Expenses January through October 2009

Income	
Congregation Income	\$34,878
Expenses	
Administration	\$16,303
Education	\$539
Fellowship	\$230
Leadership Development	\$69
Missionary/Outreach	\$1,712
Operations/Maintenance	\$15,438
Pastoral Care	\$1,572
Worship	\$577
Youth Ministry	\$421
Total Expenses	\$36,861
Net Income (Loss)	(\$1,983)
Building Fund	
Income	\$1,823
Expenses	\$3,859
Net Income (Loss)	\$(2,036)
Investment Gain/Loss	\$(15,427)

Thank you for your contributions and generosity throughout this year. We look forward to a happy holiday season.

## Ministry Praxis

Dave Nii

Everyone is welcomed to participate in sessions designed to practice our ability to provide Christian ministry to others. We are calling these, "Ministry Praxis" sessions. Our next scheduled sessions are at the church on January 12th and February 16th 2010, beginning at 7pm and ending at 8:30pm. In the first 3 sessions, we covered listening skills and Sunday morning hospitality. In the upcoming sessions we will be looking at scriptural foundations informing our diverse community of faith. For more information contact Dave Nii (303.870.2589 or dnii@cofchrist.org) who is facilitating these meetings.

### Christmas Program

The play will be the evening of December 13<sup>th</sup>, with our annual Christmas potluck before.

We will be having dinner at 5:30p, with the play at 6:30p. Brisket will be provided by the church, so we encourage you to please bring 2 side dishes along with your appetite.

### Pre-Baptismal class

Doug Shipley will once again facilitate a youth oriented pre-baptismal class starting in February 2010. This class is open to everyone who is at least 7 1/2 years old. The class will take place during the 11:00 worship service and is scheduled to end before Easter.

If you are interested, know someone who is, or know someone we should contact, please contact Doug Shipley or Laura Thorp. We want to make sure that we have plenty of books and materials.



## **Building Committee**

Art Raney

Back and forth with Greenwood Village Planning department has been the activity of recent weeks. This is to receive the tentative approval for the proposed parking lot design. This was the “fast way” to receive approval to replace the existing asphalt, but every department looks at the proposed plan and comments. With these comments come revisions, with the revisions comes another round of review. Finally we will get a plan that everyone agrees to and will satisfy their individual requirements. I will revise the “accepted” layout (drawing) for the last time, print, and submit for the permit. I will send out this document and get revised quotes for the work. Of course this is now a March - April 2010 project. As soon as the quotes are received, I will share this information with the congregation. The revised layout will also be displayed on the Building Committee information board in the fellowship hall.

We will start negotiations with Greenwood Village for renewal of the lease for the playground area near the Highline Canal Path. Larry Birch and Becca Mogg of the Building Committee have accepted the challenge to join me during these meetings. I appreciate their support and expect to have a new lease that will benefit not only the Parks and Recreation department but the Greenwood Congregation. The world church legal department has final approval of this document and agreement. The current lease expires in March of 2010.

The Country Fair for 2010 will begin planning efforts in January 2010. Dave Berg has accepted the duties of the Planning Director for the Building Committee. He has past experience, is willing to lead, and has some new money making ideas. Your ideas would help too, so talk to Dave Berg when you see him. Ask him questions and offer your personal help. Let us all make 2010 the best Country Fair ever.

New tables for the Fellowship Hall will be purchased soon. This will be a \$750 to \$1,200 expense. The tables will be the new durable fiberglass, white, and light weight. The style is to be determined based on our use (food service, meetings, quilting, sorting, display, etc.) A separate check with a dollar amount of Fifty Dollars (\$50) with the notation “tables” is requested from the congregation for this purchase. Place cash or check in the collection plate or in your personal envelope to get credit for your gift. When we collect more that we spend on tables we will buy a new vacuum cleaner (this is really going to excite some people).



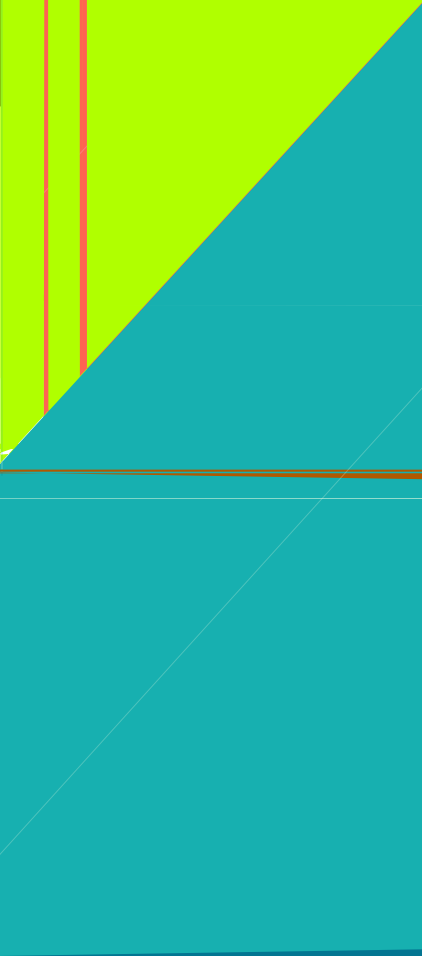
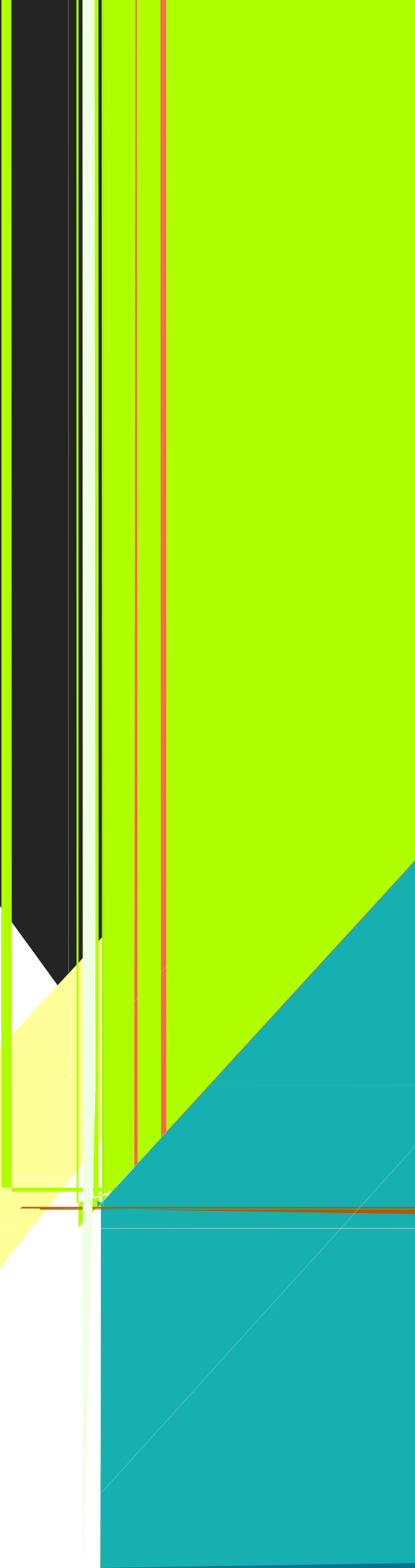
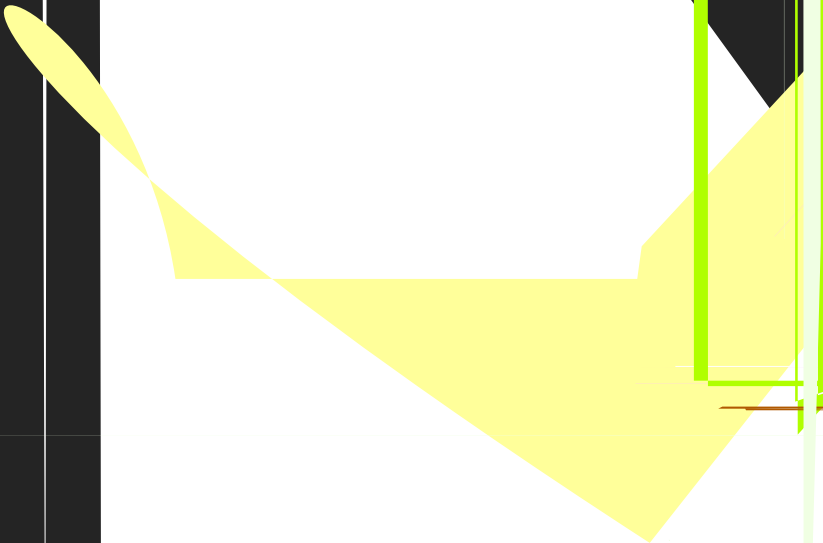
## **Family Retreat**

Doug & Kate Shipley

Mark your calendars and plan to attend the Greenwood congregation retreat March 12 - 14th at Peaceful Valley Ranch.

More information to come!

**Charity Quilt**  
Shine together



## Volunteer Opportunities

Doug Shipley spoke a few weeks ago about volunteering and had a list of opportunities for us to consider. Here is that list.

Never too soon (or too late) to consider a New Year's Resolution!

[createthegood.org](http://createthegood.org) - a great website to find volunteer opportunities in your area sponsored by AARP

[nps.gov/gettinginvolved](http://nps.gov/gettinginvolved) - national park service site with info on how to volunteer in the parks

[strength.org](http://strength.org) - teach low income families how to cook more nutritious, inexpensive meals

[rebuildingdenver.org](http://rebuildingdenver.org) - opportunity for those who like to build to help build and repair housing for low income folks with one day or on-going projects

[twilightwish.org](http://twilightwish.org) - get matched with a person 78 or older whose wish you could make come true. Many individual opportunities.

[kiva.org](http://kiva.org) - select an aspiring entrepreneur to make a modest loan to start or expand a small business in America or a developing country.

[thresholdchoir.org](http://thresholdchoir.org) - lift spirits by singing bedside to the severely ill. They want to start a Colorado chapter

[nationalcasa.org](http://nationalcasa.org) - learn to be a court appointed advocate for abused and neglected children

[tehirc.org](http://tehirc.org) - help refugees from war torn areas who have moved to the US feel at home

[mysoldier.com](http://mysoldier.com) - send upbeat letters and packages to deployed soldiers

[experiencecorps.org](http://experiencecorps.org) - join other 55 + folks to tutor struggling elementary students

[www.givinganon.org](http://www.givinganon.org) - give anonymously to anyone you know who is in need.

## Women's Ministry

Kathy Bartlett and Alice Hyatt

Fall is winding down. Winter is here.

Our Women's Retreat was a great success and a wonderful blessing for all. We continue to bond in our church community.

Our Christmas Party will be on Wednesday, December 9<sup>th</sup>. Please come and celebrate this wonderful season.

We continue with our every other Wednesday night meetings. Please join us. If you have any questions, please call Kathy or Alice.



The gang at the retreat

## Omega News

Dave Cook

When caught in a winter storm:

### OUTSIDE

#### Find shelter:

1. Try to stay dry
2. Cover all exposed parts of the body.

#### No shelter:

1. Prepare a lean-to, wind-break, or snow cave for protection from the wind.
2. Build a fire for heat and to attract attention
3. Place rocks around the fire to absorb and reflect heat.

Do not eat snow: It will lower your body temperature. Melt it first.

### IN A CAR OR TRUCK:

1. Stay in your car or truck. Disorientation occurs quickly in wind-driven snow and cold.
2. Run the motor about ten minutes each hour for heat:
  - a. Open the window a little for fresh air to avoid carbon monoxide poisoning.
  - b. Make sure the exhaust pipe is not blocked.
3. Make yourself visible to rescuers:
  - a. Turn on the dome light at night when running engine.
  - b. Tie a colored cloth (preferably red) to your antenna or door.
  - c. Raise the hood indicating trouble after snow stops falling.

Exercise from time to time by vigorously moving arms, legs, fingers, and toes to keep blood circulating and to keep warm.

**AT HOME OR IN A BUILDING:** Stay inside.

When using ALTERNATIVE HEAT from a fireplace, wood stove, space heater, etc.:

1. Use fire safeguards.
2. Properly ventilate.

#### No heat:

1. Close off unneeded rooms.
2. Stuff towels or rags in cracks under doors.
3. Cover windows at night.

Eat and drink. Food provides the body with energy for producing its own heat. Keep the body replenished with fluids to prevent dehydration.

Wear layers of loose-fitting, lightweight, warm clothing. Remove layers to avoid overheating, perspiration, and subsequent chill.

We will see our share of snow during the winter months. The best time to prepare for the next snow is the weather is mild and dry. Take an inventory of you winter supplies both for the car and the home and stock in items that you need. Be prepared and the winter snows will be a lot less bothersome this year.



## Israel's Lay of the Land

Dan Whittemore

Israel represents different things to different people. Israel is a people, a country, a place of peace, and a place of seemingly unending physical conflict and war. I am drawn to Israel because of its roots in Judaism, Christianity, and Islamic religions. The irony of all ironies is that the capital city of Israel is Jerusalem, whose very name means "God's Peace," yet the country and the people are at the apex of historical and contemporary conflict, with the hope of an everlasting peace an elusive target.

My October/November, 2009 trip to Israel helped me understand the lay of the land. I walked where Jesus walked and trekked where Moses wandered. I wanted to better understand both the horizontal and vertical aspects of Israel as a people and as a country. I traveled to understand Israel's conflict and ponder lasting solutions. I wanted to better understand the historical significance of this land and I sought to better understand the contemporary political and physical environment of all citizens of Israel.

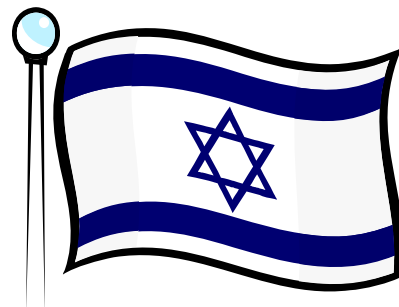
For this understanding, a visit to Israel has helped me appreciate the historical significance of birthing dynamic religious movements. Moses traversed southern Israel; the prophets of Hebrew Bible times confronted social and religious issues in the region and brought prophetic guidance in times of turmoil; Jesus was born in Bethlehem; Jesus was baptized on the Jordan river in living water from the Sea of Galilee; Jesus brought healing powers to many in the area surrounding the Sea of Galilee; Jesus confronted the power of his time; and Jesus was murdered in Jerusalem, the City of Peace. Walking in these locals has brought personal renewed interest and conviction to me. I renewed my baptism, and I shared communion at the common table. The religion of Islam is also real and most significant to the majority of people within the greater Near East. Religion is most significant to me because of real events that transpired in Israel.

Much of the trip was archeological appreciation. Archeology is the tool to better understand and appreciate the historical places of Israel. Many

"tels" exist in Israel, which are manmade hills where one civilization is built upon the ruins of an earlier civilization. There are many sites where the early Canaanite/Israeli/Judean/etc. civilizations are built upon by the Greek, the Romans, the Muslims, the Christians, the Palestinians and others. These "vertical" civilizations also provide the present day "horizontal" challenges, since many of the successor communities live where the claim to the land is in conflict.

Israel was created in 1948 as a national homeland for people of Jewish descent, following the devastating genocide holocaust of the Jewish people during the Nazi's aggression of World War II. Many believe Israel's land title is the Hebrew Bible, as a contract between God and God's people. Israel is a people not only of Jewish heritage, but also includes Palestinian Muslims, Palestinian Christians and many other assemblages of people. Of the Jews within "their" homeland, approximately 85% are secular Jews without religious participation in Judaism. Even within Christianity, there is too little agreement among the various Eastern and Western Christian organizations concerning applications of peace and compatible solutions for the region. Our own Community of Christ seeks to facilitate God's Shalom and has historical linkage in preparing the land for the return of the people of Abraham, Isaac, and Jacob. Solutions to be realized have more than religious significance.

A visit to Israel is compelling. I touched history and I reflected upon critical issues of today in a war-torn piece of real estate. Issues are much more complex than any solution(s) I can contemplate and offer, but I am committed to work for Shalom for ALL people in Israel and everywhere. Israel is a sacred and spiritual place.



## **Worship Commission**

Judy Scott

This is a wonderful time of the year that seems to have great potential to bring out the best in each of us. A time to recognize the gifts each one possesses and share thanks in both words and deeds for our blessings. It is a time of anticipation for the joy and good will that abounds during the Christmas season. The Greenwood congregation continues to be blessed by an abundance of talented people who are willing to share their skills and insight with the congregation.

On average we have twenty adults who plan the worship services throughout the year. The broad range of ages and talents that these persons represent in our community provides varied and fresh ways to experience worship. Greenwood offers a similar number of dedicated, skilled persons who serve in the role of speakers in addition to visiting ministers from time to time. Everyone who accepts the invitation to share in offering prayers plays a role in putting into action the concept of being a "community". Over thirty members share special skills in providing ministry directed to our young children during worship and as Sunday School teachers. An ever growing and changing number of persons skilled in providing media services allows us to see and hear the ministry that is provided (organized by Bill Mogg). We are also blessed by a limited number of persons who share their singing and instrumental music talents with us to enhance our worship experiences (organized by Dawn Cook). The current set of skilled musicians that provide piano and organ accompaniment is limited to six persons to whom a great deal of appreciation is due. The Deacon unit of six persons who serve the congregation every week is also a small but dedicated group. Other key roles that make our congregational life possible include Hospitality Ministry (organized by

Dave Nii), Nursery services (organized by Alice Hyatt), and Cleaning crews (organized by Bill Mogg). Office Manager, Laura Thorp, is tasked with keeping the details organized and available to the congregation. The vast majority of Greenwood Community of Christ members serve in multiple roles.

If you find your roles listed above THANK YOU for the integral part you play in our worship community. If you have interest in participating in additional roles please contact the pastor, a planner, or me with your ideas. The 2010 Worship Schedule is being finalized, but a printed copy should always be posted on the bulletin board outside the office door. Once the schedule is published, Office Manager, Laura Thorp, is the keeper of the schedule and is tasked with keeping the most updated version on the Greenwood web site and on the bulletin board. If you are approached to serve in new ways, consider it an opportunity to bless the rest of us with your unique talents.

## **Missionary Commission**

Jan Hyatt

The Missionary Commission Meetings are held at the church on the first Monday of the month from 7:30p to 8:30p.

We are meeting to discern the place of the Greenwood congregation in the peaceable kingdom of God and to grow our church.

Please come share your ideas and input with us! Contact Jan Hyatt at 720.989.7577 or Jeanette.Hyatt@gmail.com with any questions or comments.

## Christian Ed

Laura Thorp

This year has had an amazing start! We have an AWESOME group of participants and leaders in ALL of our Sunday morning classes.

**NURSERY** (under 2) - This is being led by Gayla Mogg and Kara Hughes. Someone is always there with a smile waiting for that little one to come and visit with them.

**PRE-K** (2-4yrs) -- This active group is Led by Karen Berg and Becca Mogg. This class is learning about the Bible and the wonderful stories in it. A couple weeks ago I sat in as we learned about Noah and the great flood.

**PRIMARY** (K-4 grades) - This group is led by Pat Mogg and Jan Hyatt. This is a large group that is ready for anything! They are learning new things using drawing, stories and games. The laughter from the room can be contagious!

**TWEENERS** (5-8 Grades) - This incredible group of pre-teens and early teens is led by Pam Nii and Lisa O'Reilly. This group is learning about the love of Jesus through interesting and inventive interaction.

**SR HIGH** (9-12 grades) -- This amazing group of teens is led by Bill Mogg and Alice Hyatt. This group explores different topics that are relevant to the lives of teens today, while using the scriptures.

**ADULTS** - The adults have two choices this year.

**POWER AND LIGHT** - This group is led by Art Raney, Betty Dower and Nancy Conklin. This group explores the scriptures and themes given to us from the world church. (This also follows the common lectionary)

**COMPARITIVE RELIGIONS** - This group is led by Andy & Jana Horner. They are exploring different religious faiths and how they are similar to us and each other. This group is also visiting other churches to help with their understanding.

We hope you will join us this holiday season and into 2010!



Primary Class



Tweeners



Power and Light class



**2009 Calendar Items**

- 2<sup>nd</sup> Women's Support Group - 7p
- 6<sup>th</sup> Adopt a Family deadline
- 7<sup>th</sup> Missionary Commission Meeting - 7:30p
- 9<sup>th</sup> Women's Group Christmas Party - 7p at Kathy Bartlett's
- 13<sup>th</sup> Daily Bread ordering deadline  
**Christmas Potluck and play - 5:30p**
- 15<sup>th</sup> OBK's - TBA
- 16<sup>th</sup> Women's Support Group - 7p
- 25<sup>th</sup> **Christmas**
- 30<sup>th</sup> Women's Support Group - 7p



**2010 Calendar Items**

- 1<sup>st</sup> Missionary Commission Meeting - 7:30p
- 9<sup>th</sup> OBK's - TBA
- 10<sup>th</sup> Women's Support Group - 7p
- 12<sup>th</sup> **Newsletter Deadline**
- 14<sup>th</sup> **Valentine's Day**
- 15<sup>th</sup> **President's Day**
- 16<sup>th</sup> Charitable Quilters - 6p
- Ministry Praxis - 7p
- Potluck after church
- 21<sup>st</sup> Women's Support Group - 7p
- 24<sup>th</sup>



**2010 Calendar Items**

- 1<sup>st</sup> **New Year's Day**
- 4<sup>th</sup> Missionary Commission Meeting - 7:30p
- 10<sup>th</sup> Planning and Coordination meeting - after church
- 12<sup>th</sup> OBK's - TBA
- Ministry Praxis - 7p
- 13<sup>th</sup> Women's Support Group - 7p
- 17<sup>th</sup> Potluck after church
- 18<sup>th</sup> **Martin Luther King, Jr. Day**
- 19<sup>th</sup> Charitable Quilters - 6p
- 27<sup>th</sup> Women's Support Group - 7p



**2010 Calendar Items**

- 12<sup>th</sup> - 14<sup>th</sup> Congregational Retreat - Peaceful Valley Ranch
- 14<sup>th</sup> **Daylight Savings Begins**
- 21<sup>st</sup> Budget Business Meeting - after church



## Important Phone Numbers

Church  
303-789-7036

Newsletter Team  
Su Jones 303-806-9144  
Laura Thorp 720-280-4844

Pastor  
Bill Hyatt 303-771-7936

Pastoral Care  
Pat Mogg 303-759-0048

Mission Center  
Tim Ashburn 303-426-5900

Chief Financial Officer  
Art Troyer 303-761-3992

OBK's  
Rosalee Minthorn 303-693-4756

Building Committee/Sr High Youth Sponsor  
Art Raney 303-783-0283

Peace & Social Justice/Sr High Youth Sponsor  
DeziRae Astle 303-995-2073

"Tweeners"  
Greg Mogg 303-683-6549

Sr High Youth Coordinator  
Kaitlyn Einhellig 303-948-0961

IT Support  
Dave Cook 303-688-2204

Worship Commission  
Judy Scott 303-699-3397

Fellowship  
Julie Einhellig 303-948-0961

Christian Ed  
Laura Thorp 720-280-4844

Missionary Commission  
Jan Hyatt 720-200-0691

Women's Ministry  
Kathy Bartlett 303-781-2951  
Alice Hyatt 303-771-7936

## Newsletter Delivery

We hope you have enjoyed the newsletter. We would now like your input on it.

If you would prefer getting it by "snail" mail, please fill out the "coupon" on this page, place it in the offering plate, mail it to us at the church, or email us at [GWCOcnews@aol.com](mailto:GWCOcnews@aol.com) with the information, and we will send it out to you quarterly.

If you would like to continue receiving it by email, don't do anything and we will email it out to you quarterly.

Thank you and your feedback is **always** welcome.

### *I would like to:*

- Receive my newsletter by snail mail
- Receive my newsletter by email
- Read the newsletter on the website
- Correct my address/phone #/email/name
- Add someone to the mailing list
  
- Please have someone on the Missionary Commission contact me
- Please have the Pastor contact me
- I would like more information about:

\_\_\_\_\_.

Name \_\_\_\_\_

Address \_\_\_\_\_  
\_\_\_\_\_

Phone \_\_\_\_\_

Email address \_\_\_\_\_  
\_\_\_\_\_



## **Christmas Program and Potluck**

**The play will be the evening of  
December 13<sup>th</sup>, with our annual  
Christmas potluck starting at 5:30p,  
and the play following at 6:30p.**

**Please plan to attend. It's always a  
good time for everyone!**