

FACILITIES

Our kitchen/dining hall, restrooms with showers and our open sided chapel are centrally located. There is a sand volleyball court, horseshoe pits and a recreation building with ping-pong tables. The dorm buildings include several 12' X 24' rooms with steel bunks, which can be used for Men's and Women's Dormitories or for larger families, and several 12' X 12' rooms, for smaller families. Some of the smaller rooms have built-in wooden bunks, double beds, or steel bunks. Dorm space is by assignment, those with special needs and early registrants first.

There are 8 camper spaces with full utility hook-ups and several locations for tents and self-contained units. Camper spaces with full hook-ups can be reserved, other spaces are by first arrival choice. Campers and Tents are encouraged because of limited dorm space.

Bring your own bedding, towels, and a jacket or sweater. Nights can be cool in the Colorado Mountains - even in July.

COSTS

	Adults/Youth	Under 13
Breakfast	\$ 6.00	\$ 4.00
Lunch	7.25	5.00
Dinner	8.00	5.00
Stay Overnight	15.00	15.00
Total BY THE DAY	<u>\$36.25</u>	<u>\$29.00</u>
Total BY THE WEEK	<u>\$225.00</u>	<u>\$185.00</u>

In addition to the above, 2023 Big Spruce Reunion T-Shirts are \$20.

No charge for children under 4. If you are not staying on the grounds, registration for the week is \$125.00 including meals

My Registration Information:

Date sent in: _____ Check #: _____



Community of Christ

The Way Forward



BIG SPRUCE REUNION

JULY 1-8, 2023

Big Spruce Campground

24862 Ute Trail Road • Cedaredge, CO 81413 • 970.856.3741

Big Spruce REUNION



REGISTRATION

Registration starts at 2:30pm on the 1st. Supper will be about 5:30 and some activities are planned for the evening. Sunday will be a day to reconnect and share in a worship service in the morning. Reunion is over on the 8th after closing activities and clean up.

OFFERINGS

Offerings will be received during the Sunday morning service and other times during the week as needs are determined, or can be made at time of registration.

ABOUT US

Groups of Community of Christ members and friends have been meeting for a family camp reunion on the western slope of Colorado for over five decades. We celebrated 50 years of camping at the Big Spruce Campground in 2018 with a large celebration gathering. While the anniversary has come and gone, there is so much to be shared by joining with us in this special week of fun, worship, spiritual growth and reconnection.

Interested in learning more about Big Spruce Campground?

Check out our website at:

bigsprucecampground.org

LOCATION

Big Spruce Campground, 3.5 miles north of Cedaredge on Hwy 65, then 1.7 miles East on Ute Trail Road, is 7,200 feet above sea level on the south side of Grand Mesa, with rural residential property all around. Ute Trail Road is asphalt to our entrance. Approx. 20 minutes from the Grand Mesa, Fishing, Horseback Riding and many hiking trails are nearby.



ALTERNATIVE ACCOMODATIONS

For those who prefer, there are 3 motels in Cedaredge. **MAKE YOUR OWN ARRANGEMENTS!** Stay Wise Inn, 970.856.1000; Cedaredge Lodge, 970.856.3727; or Tri-R Motel, 970.856.3222. A commercial campground and RV Park, Aspen Trails, is on Hwy 65 2.5 miles from the Reunion Grounds, 970.856.6322.

Big Spruce **REUNION**

Hello Friends,

We are excited to invite you to the 2023 Big Spruce Reunion. This year, we are please to have Presiding Bishop Ron Harmon and Apostle Shandra Newcom as our guest ministers at Big Spruce Reunion.

If you haven't attended Big Spruce in awhile, no worries, we are excited to have you come and participate in whatever way you feel comfortable. There will always be a seat at our table for you.

Enclosed you will find the brochure for this year's reunion. Please look it over and consider coming to spend this special time with us this summer. Our experience will not be complete without you.

Registration will start at 2:30pm on the 1st. Supper will be about 5:30pm and some activities are planned for the evening. Sunday will be a day to reconnect and share in a worship service in the morning. We will have a celebration of the 4th of July on Tuesday evening. Reunion is over on the 8th after closing activities and clean up.

We try to keep the reunion registration costs low, so all who want to attend can come. Offerings will be received during the Sunday morning service and other times during the week as needs are determined, or can be made at time of registration.

All are welcome - we look forward to seeing you soon!

Blessings,

Melanie



**BIG
SPRUCE**
CAMPGROUND



Community of Christ

Guest MINISTRY



Big Spruce Reunion is delighted to have Presiding Bishop Ron Harmon and Western USA Field Apostle Shandra Newcom.

Ron Harmon PRESIDING BISHOP

Ron's previous assignments include the Council of Twelve Apostles, Director of Leadership Development Ministries, Spectacular and International Youth Forum, Urban Ministries, and president of the Kentucky-Indiana USA Mission Center.

Being around Ron, one can't help but become excited about the spirit of God and where we, individually and collectively, are being called to service.



Shandra Newcom APOSTLE

Shandra is serving the church as the Western Field & Spectacular Apostle. She also will continue to serve as the Sierra Pacific Mission Center President. Previously, Shandra was the Rocky Mountain Mission Center President and as a Campus Minister at Graceland University.

As many of us have already experienced, Shandra brings creativity and wonder to her ministry that is deeply rooted in community. She lives on the edge of mission, calling us into deeper communion with one another and the spirit.

An

AMERICAN

Experience

COME DRESSED AS YOUR
FAVORITE AMERICAN IN
HISTORY!

*Share your families
American story*

EXPLORE AMERICAN
CULINARY TREATS

*Play Games
Together*



Creating Community

CAMP ACTIVITIES



Worship

We'll have many opportunities to engage in diverse and lively communal worship.



Classes

Classes will be held for all ages.



Campfire

We'll gather each evening to share in fun skits, good laughs and songs from across the decades of Big Spruce Campfires.



Art & Craft Classes

Artists will provide craft and art classes during afternoons.



Tie Dye

Bring WASHED Cotton Garments (no jeans)



Recreation Activities

Big Spruce and the Grand Mesa provide many opportunities to participate in recreational activities including on site games and tournaments. We'll go to Delta to swim during the week. Off site, there are many local hiking trails and fishing lakes.



Outreach International Focus Day

Join in a poverty meal to highlight hunger around the world that will include a free will donation to help Outreach International, an organization dedicated to providing sustainable good to the poor of the world.



2023 BIG SPRUCE



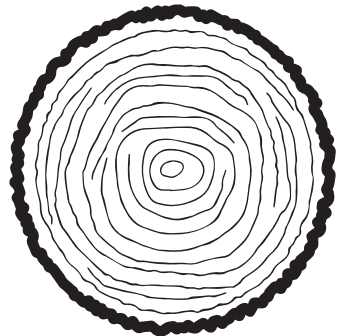
T-SHIRT

Add to your t-shirt collection with this year's Big Spruce Reunion T-Shirt. Made of a lightweight, Gildan SoftStyle shirt, you are sure to be comfy and stylish while sharing your love for our yearly week together. We will be taking orders this year, as we know not everyone is as T-Shirt happy as Melanie!

\$20 **Adult Sizes S-3X**
Youth Sizes XS-XL

Please be sure to email melgrimes@gmail.com or send in your registration with your shirt order by June 16, 2023 to ensure we have your shirt at reunion. Any profits will go to support the reunion and campground.

We will also have items for sale to help support future growth of the campground. There will be some pieces of the Big Spruce, Colorado & Big Spruce souvenirs and other items. If you have items you'd like to donate to help raise money to keep Big Spruce around for future generations, handmade or otherwise, bring them along. We welcome your donation & contribution to the campground!



Community of Christ

BIG SPRUCE REUNION

Name(s): _____ Phone #: _____
 Address: _____ Circle one: All Week Part
 City, State & Zip: _____ Arrival Date: _____
 E-mail Address: _____

Please list children:

Name	Age	Grade Completed

Unisex T-Shirt Sizes (write # of shirts needed next to each size)

Adult ___S ___M ___L ___XL ___2XL ___3XL
Youth ___S ___M ___L ___XL *All Shirts are \$20*

We will need (check one):

Camper/Motor Home Space
(with full hookup)

Tent or Camper Space
Electricity? Yes No

Family Room

Dorm Space

We will stay off the grounds

ADDITIONAL INFORMATION

Please list any information helpful in our planning:

Will help with children's classes - how?

Any special talents to volunteer?

Other items/special needs to consider:

Years Previously Attended Big Spruce Reunion:

Amount Enclosed: \$ _____

Send registration to:

Bill Grimes
 8 Garden Drive
 Colorado Springs, CO 80904
 719.635.9439 • wlgrimes@gmail.com

REGISTRAR USE ONLY:

Cost: \$ _____
 Prepaid: _____
 Due: \$ _____
 Cash Check
 Dorm or Camping #:

	Adults/Youth	Under 13
Breakfast	\$ 6.00	\$ 4.00
Lunch	7.25	5.00
Dinner	8.00	5.00
Stay Overnight	15.00	15.00
Total BY THE DAY	\$36.25	\$29.00
Total BY THE WEEK	\$225.00	\$185.00

No charge for children under 4. If you are not staying on the grounds,
 registration for the week is \$125.00 plus any meals

Shirts are \$20 each.