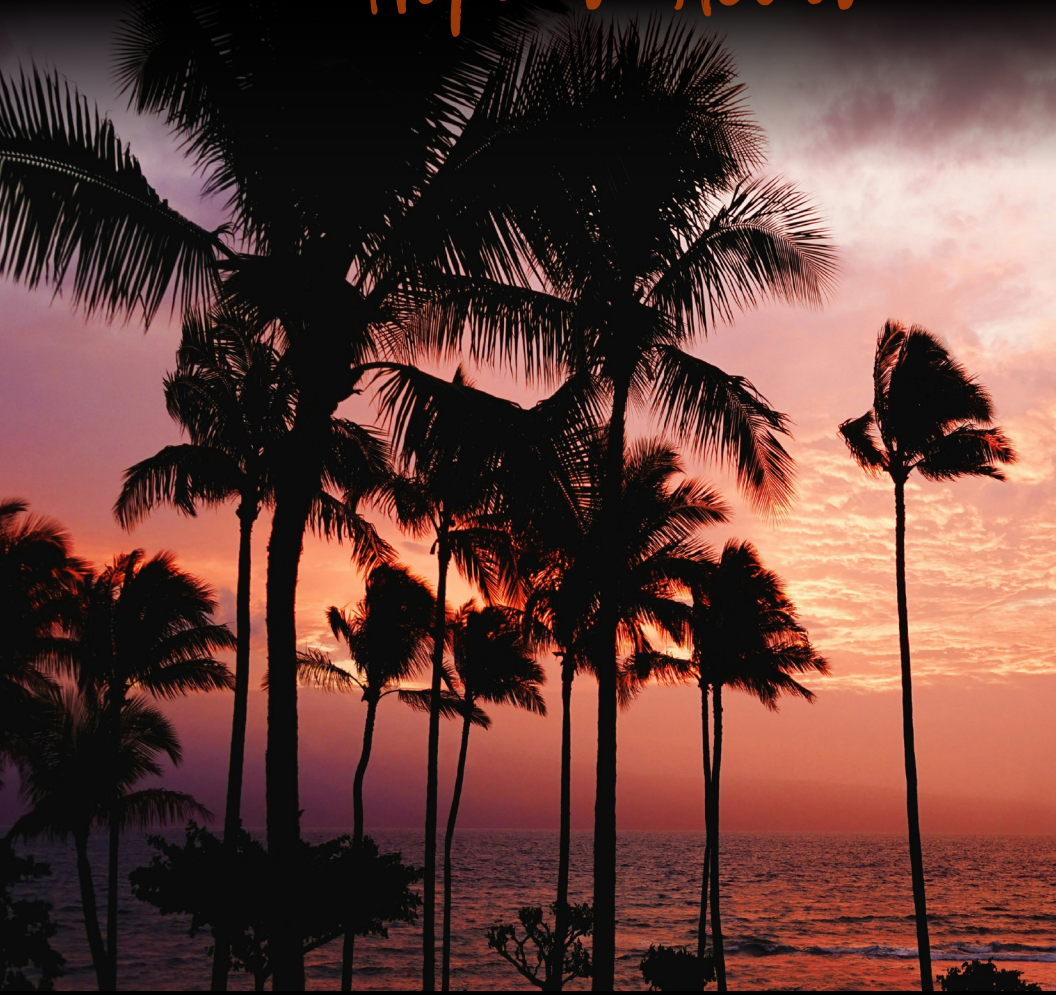




Community of Christ
Hope in Action



BIG SPRUCE REUNION

JUNE 28-JULY 5, 2025

Big Spruce Campground

24862 Ute Trail Road • Cedaredge, CO 81413 • 970.856.3741

Big Spruce REUNION



REGISTRATION

Registration starts at 2:30pm on the 28th. Supper will be about 5:30 and some activities are planned for the evening. Sunday will be a day to reconnect and share in a worship service in the morning. Reunion is over on the 5th after closing activities and clean up.

OFFERINGS

Offerings will be received during the Sunday morning service and other times during the week as needs are determined, or can be made at time of registration.

ABOUT US

Groups of Community of Christ members and friends have been meeting for a family camp reunion on the western slope of Colorado for over five decades. We celebrated 50 years of camping at the Big Spruce Campground in 2018 with a large celebration gathering. While the anniversary has come and gone, there is so much to be shared by joining with us in this special week of fun, worship, spiritual growth and reconnection.

Interested in learning more about Big Spruce Campground?

Check out our website at:

bigsprucecampground.org

LOCATION

Big Spruce Campground, 3.5 miles north of Cedaredge on Hwy 65, then 1.7 miles East on Ute Trail Road, is 7,200 feet above sea level on the south side of Grand Mesa, with rural residential property all around. Ute Trail Road is asphalt to our entrance. Approx. 20 minutes from the Grand Mesa, Fishing, Horseback Riding and many hiking trails are nearby.



ALTERNATIVE ACCOMMODATIONS

For those who prefer, there are 3 motels in Cedaredge. **MAKE YOUR OWN ARRANGEMENTS!** Stay Wise Inn, 970.856.1000; Cedaredge Lodge, 970.856.3727; or Tri-R Motel, 970.856.3222. A commercial campground and RV Park, Aspen Trails, is on Hwy 65 2.5 miles from the Reunion Grounds, 970.856.6322.

Guest MINISTRY



Kim Naten

Greater Pacific
Northwest
Mission Center
President



Kim Naten has had a lifelong relationship in and with Community of Christ. She was born and raised near Seattle, WA, and attended youth camps as Samish Island throughout her childhood and teen years. She has staffed, directed and cooked for many camps since then. Kim attended Graceland University as well as Edmonds Community College. She has lived in Western Washington for most of her adult life, staying active in local congregations, serving as Pastor, and working as Recorder and Admin Staff for the Greater Pacific Northwest USA Mission Center (GPNW) for 6 years prior to becoming Mission Center President in 2017. She and her husband, Rick, have 2 adult children, Taylor and Katherine, both of whom are married, and an 11-year-old Black Lab, Leo. They have one grandson, Declan, and delight in spending as much time with him as possible.

Hawaiian
LUAU



Activities Fun
Games

Bring your favorite Hawaiian wear

2025 BIG SPRUCE



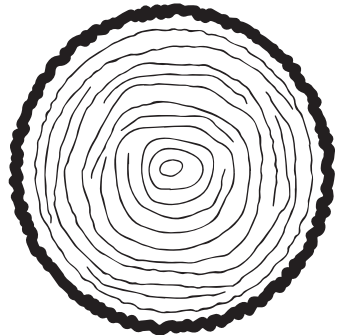
T-SHIRT

Add to your t-shirt collection with this year's Big Spruce Reunion T-Shirt. Made of a lightweight, Gildan SoftStyle shirt, you are sure to be comfy and stylish while sharing your love for our yearly week together. We will be taking orders this year, as we know not everyone is as T-Shirt happy as Melanie!

\$20 **Adult Sizes S-3X**
Youth Sizes XS-XL

Please be sure to email melgrimes@gmail.com with your shirt order by June 5, 2025 to ensure we have your shirt at reunion. Any profits will go to support the reunion and camp-

We will also have items for sale to help support future growth of the campground. There will be some pieces of the Big Spruce, Colorado & Big Spruce souvenirs and other items. If you have items you'd like to donate to help raise money to keep Big Spruce around for future generations, handmade or otherwise, bring them along. We welcome your donation & contribution to the campground!



Creating Community

CAMP ACTIVITIES



Worship

We'll have many opportunities to engage in diverse and lively communal worship.



Classes

Classes will be held for all ages.



Campfire

We'll gather each evening to share in fun skits, good laughs and songs from across the decades of Big Spruce Campfires.



Art & Craft Classes

Artists will provide craft and art classes during afternoons.



Recreation Activities

Big Spruce and the Grand Mesa provide many opportunities to participate in recreational activities including on site games and tournaments. We'll go to Delta to swim during the week. Off site, there are many local hiking trails and fishing lakes.



Outreach International Focus Day

Join in a poverty meal to highlight hunger around the world that will include a free will donation to help Outreach International, an organization dedicated to providing sustainable good to the poor of the world.



FACILITIES

Our kitchen/dining hall, restrooms with showers and our open sided chapel are centrally located. There is a sand volleyball court, horseshoe pits and a recreation building with ping-pong tables. The dorm buildings include several 12' X 24' rooms with steel bunks, which can be used for Men's and Women's Dormitories or for larger families, and several 12' X 12' rooms, for smaller families. Some of the smaller rooms have built-in wooden bunks, double beds, or steel bunks. Dorm space is by assignment, those with special needs and early registrants first.

There are 8 camper spaces with full utility hook-ups and several locations for tents and self-contained units. Camper spaces with full hook-ups can be reserved, other spaces are by first arrival choice. Campers and Tents are encouraged because of limited dorm space.

Bring your own bedding, towels, and a jacket or sweater. Nights can be cool in the Colorado Mountains - even in July.

COSTS

	<u>Adults/Youth</u>	<u>Under 13</u>
Staying Onsite		
Total BY THE WEEK	\$275.00	\$210.00
Staying Offsite		
Total BY THE WEEK	\$175.00	\$110.00
Total BY THE DAY	\$50.00	\$35.00

All prices above include meals. No charge for children under 4.
Free will offering for those just attending for an individual meal.

In addition to the above, 2024 Big Spruce Reunion T-Shirts are \$20.

My Registration Information:

Date sent in: _____ Check #: _____

